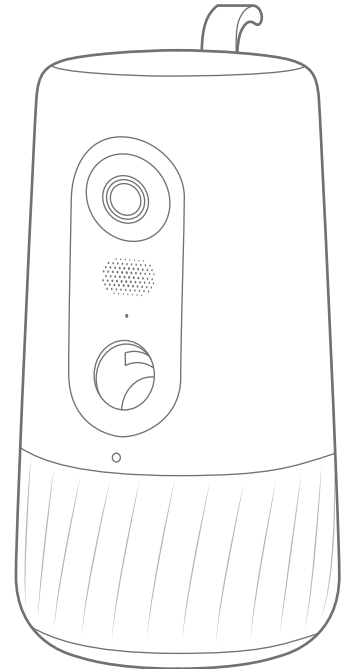


# eufy

PET

## QUICK START GUIDE

Dog Camera D605



# eufy

PET

Anker Innovations Limited. All rights reserved. eufy Pet and eufy Pet Logo are trademarks of Anker Innovations Limited, registered in the United States and other countries. All other trademarks are the property of their respective owners.

51005002903 V3

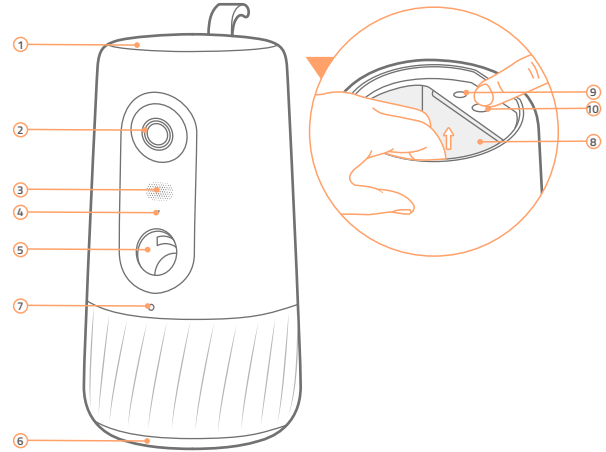
クイックスタートガイド  
빠른 시작 가이드

English 01

日本語 07

한국어 13

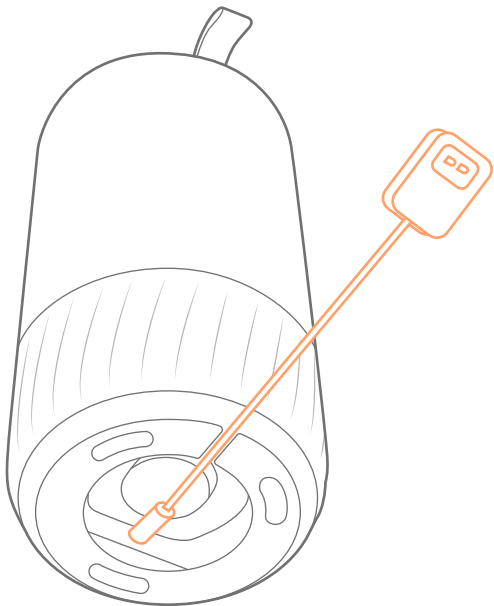
## PRODUCT OVERVIEW



- ❶ Treat Container Lid
- ❷ Status LED
  - Blue: Connected.
  - Flashing red: Disconnected.
  - Flashing blue: Connecting / Someone is watching live video / Recording a video.
  - Green: Starting or restarting the system.
  - Green for 10 seconds: Launching treats.
- ❸ Speaker
- ❹ Microphone
- ❺ Treat Launching Port
- ❻ Residue Lid
- ❼ Treat Container
- ❽ SYNC Button
- ❾ Release Button: Press and hold to take out the treat container.

## 2 / POWERING DOG CAMERA D605

Connect Dog Camera D605 to power with the power port on the bottom.

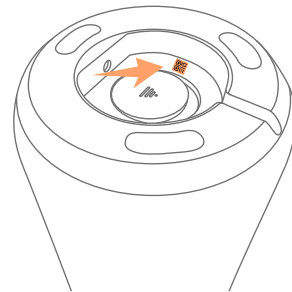
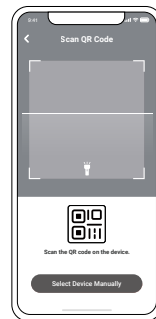
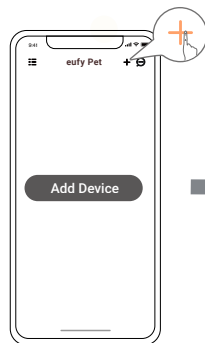


## 3 / ADDING TO EUFY PET APP

1. Download and install the eufy Pet app, then sign up for an account.

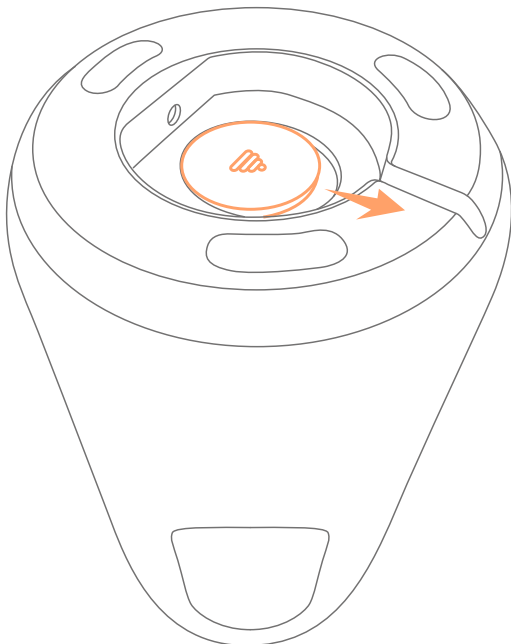


2. Scan the QR Code on the bottom using the eufy Pet app and follow on-screen instructions to complete the setup.



## 4/ REGULAR MAINTENANCE

- Clean treat container regularly.
- Remove residue regularly: remove the lid and pour out residue.



## 5/ NOTICE

The adapter shall be installed near the equipment and shall be easily accessible. Do not use the Device in the environment at too high or too low temperature, never expose the Device under strong sunshine or too wet environment. The suitable temperature for the product and accessories is 0°C to 40°C (32°F to 104°F).

When supplying, please place the device in an environment that has a normal room temperature and good ventilation.

It is recommended to supply the device in an environment with a temperature that ranges from 5°C~25°C (41°F to 77°F).

Please ensure to use only the adapter offered by the manufacturer. Using unauthorized adapter may cause danger and violate the authorization of the projector and the guarantee article.

This adapter is for indoor use only. The rated output voltage/current of the adapter is 12VDC/2A. The plug of adapter considered as disconnect device.



Your product is designed and manufactured with high quality materials and components, which can be recycled and reused.

### FCC Statement

This device complies with Part 15 of the FCC Rules. Operation is subject to the following two conditions: (1) this device may not cause harmful interference, and (2) this device must accept any interference received, including interference that may cause undesired operation.

**Warning:** Changes or modifications not expressly approved by the party responsible for compliance could void the user's authority to operate the equipment.

**Note:** This equipment has been tested and found to comply with the limits for a Class B digital device, pursuant to Part 15 of the FCC Rules. These limits are designed to provide reasonable protection against harmful interference in a residential installation.

This equipment generates, uses and can radiate radio frequency energy and, if not installed and used in accordance with the instructions, may cause harmful interference to radio communications. However, there is no guarantee that interference will not occur in a particular installation. If this equipment does cause harmful interference to radio or television reception, which can be determined by turning the equipment off and on, the user is encouraged to try to correct the interference by one or more of the following measures:

(1) Reorient or relocate the receiving antenna. (2) Increase the separation between the equipment and receiver. (3) Connect the equipment into an outlet on a circuit different from that to which the receiver is connected. (4) Consult the dealer or an experienced radio / TV technician for help.

### FCC Radio Frequency Exposure Statement

The device has been evaluated to meet general RF exposure requirements. The device can be used in fixed / mobile exposure condition. The min separation distance is 20 mm.

#### Notice: Shielded cables

All connections to other computing devices must be made using shielded cables to maintain compliance with FCC regulations.

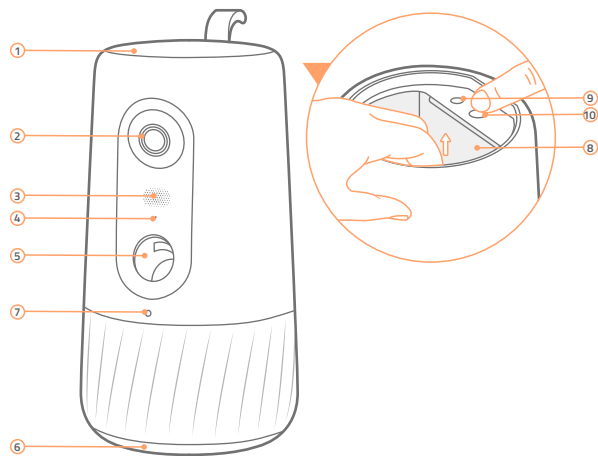
The following importer is the responsible party.

Company Name: POWER MOBILE LIFE, LLC

Address: 10900 NE 8TH ST, STE 501, BELLEVUE, WA 98004

Telephone: 1-800-988-7973

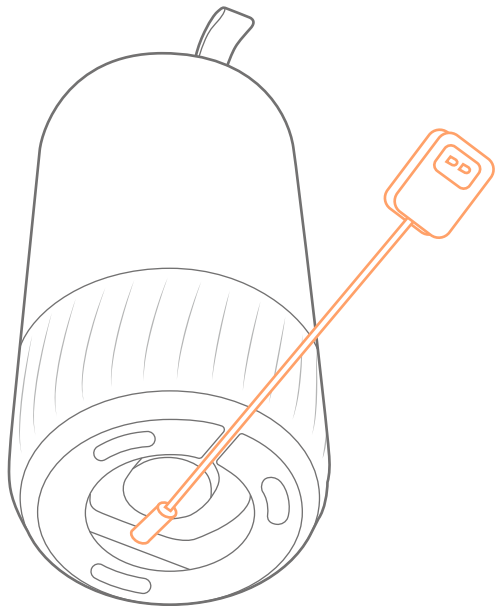
## 製品概要



- |           |                                    |
|-----------|------------------------------------|
| ① おやつ容器の蓋 | ⑦ LED インジケータ                       |
| ② カメラ     | ・青色：接続済み                           |
| ③ スピーカー   | ・赤色の点滅：接続解除済み                      |
| ④ マイク     | ・青色の点滅：接続中 / ライブストリーミング視聴中 / 録画中   |
| ⑤ おやつ発射口  | ・緑色：システムの起動または再起動中                 |
| ⑥ 底蓋      | ・10 秒間緑色：おやつの発射中                   |
|           | ⑧ おやつ容器                            |
|           | ⑨ 同期ボタン                            |
|           | ⑩ 取り外しボタン：長押しすると、おやつ容器を取り出すことができます |

## 2/ 電源を入れる

本体の底にある電源ポートに接続し、電源をオンにします。

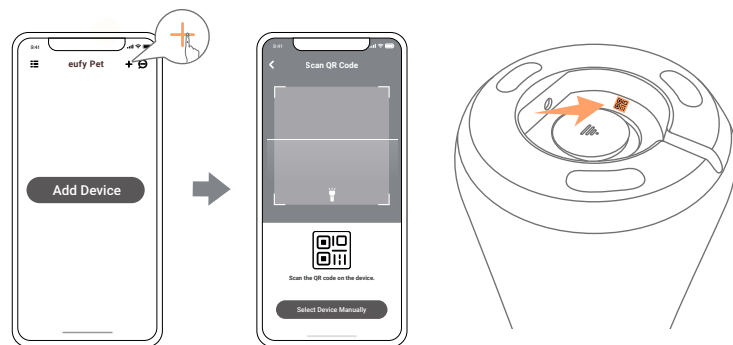


## 3/ EUFY PET アプリへの追加

1. Eufy Pet アプリをダウンロードし、アカウントに登録します。

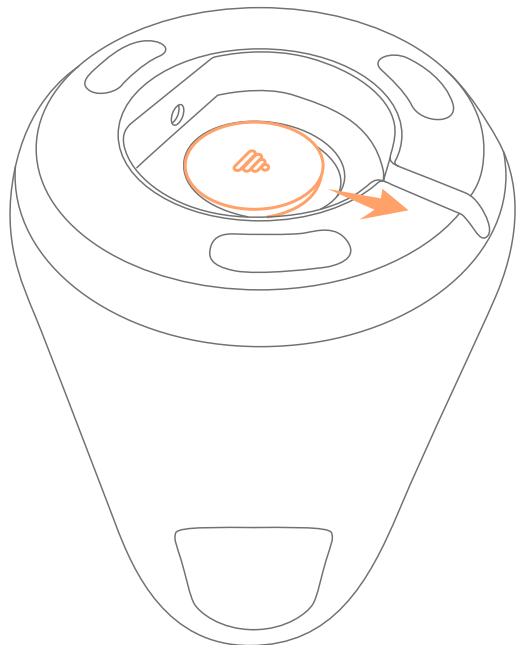


2. Eufy Pet アプリを起動し、本体底面の QR コードをスキャンします。画面の指示に従ってセットアップを完了します。



## 4/ 定期メンテナンス

- ・おやつ容器は定期的に清掃してください。
- ・底蓋を外し、残留物を取り除きます。



## 5/ 注意事項

電源アダプタは機器の近くに設置し、手の届きやすい状態にしてください。温度が極端に高いもしくは低い環境で本製品を使用しないでください。直射日光および高い湿度を避けて使用・保管してください。本製品および付属品の動作温度は0°C～40°Cですが、室温（5°C～25°C）でのご使用をお勧めします。

通気性に優れた室内でご使用ください。

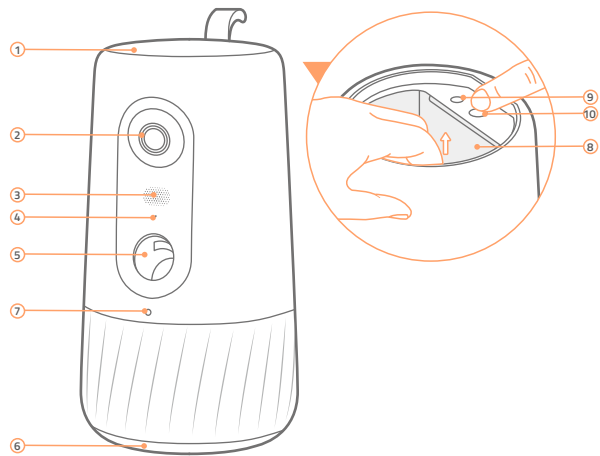
同梱の電源アダプタのみを使用してください。それ以外のアダプタを使用すると、事故や怪我につながる恐れがあります。また、保証が適応されない可能性があります。

この電源アダプタは屋内使用専用です。定格出力電圧 / 電流は DC12V/2A です。



本製品は、リサイクルおよび再利用が可能な高品質の素材および部品を使用して設計・製造されています。

## 제품 개요

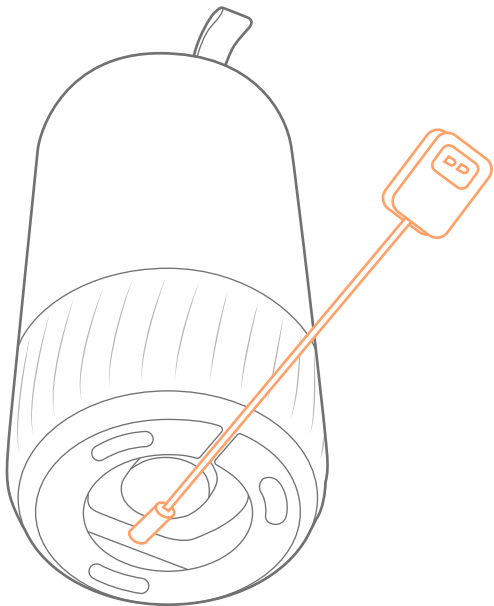


- |            |  |
|------------|--|
| ① 간식 용기 뚜껑 | ⑦ 상태 LED<br>· 파란색: 연결됨<br>· 빨간색으로 깜박임: 연결 해제됨<br>· 파란색으로 깜박임: 연결 중 / 라이브 동영상 시청 중 / 동영상 녹화 중<br>· 녹색: 시스템 시작 또는 다시 시작 중<br>· 10초간 녹색불: 간식 공급 중 |
| ② 카메라      | ⑧ 간식 용기  |
| ③ 스피커      | ⑨ SYNC 버튼  |
| ④ 마이크      | ⑩ 해제 버튼: 길게 눌러 간식 용기를 꺼냅니다.  |
| ⑤ 간식 공급 포트 |  |
| ⑥ 잔류물 뚜껑   |  |



## 2 / DOG CAMERA D605 전원 켜기

Dog Camera D605 를 하단의 전원 포트에 연결합니다.

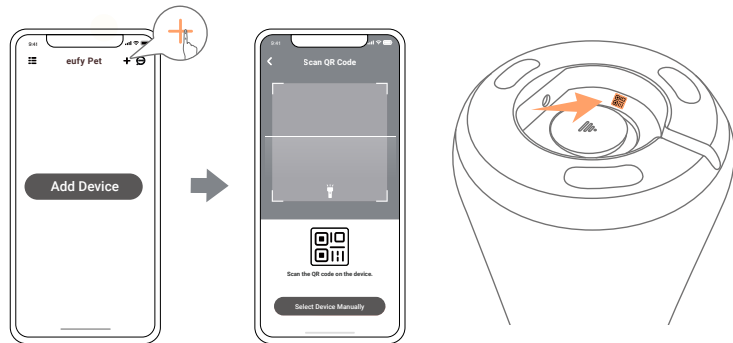


## 3 / EUFY PET 앱에 추가하기

1. eufy Pet 앱을 다운로드하여 설치한 후 계정을 새로 만듭니다.

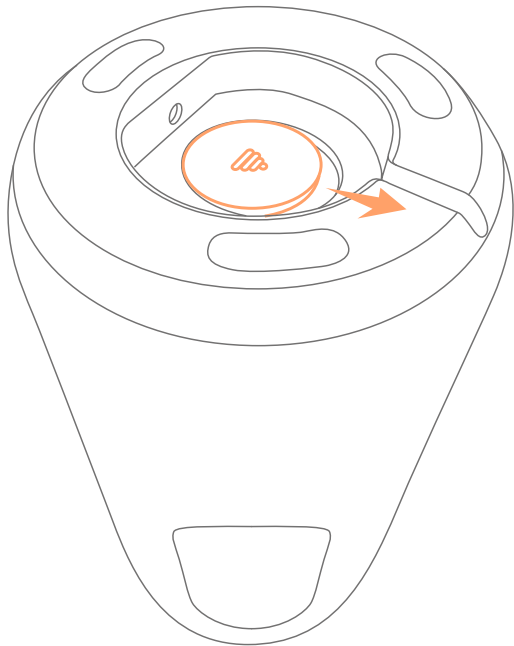


2. eufy Pet 앱을 이용하여 하단의 QR 코드를 스캔한 후 화면의 안내에 따라 설정을 완료합니다.



## 4/ 정기 유지관리

- 간식 용기를 정기적으로 청소합니다.
- 남은 간식을 정기적으로 비웁니다. 이때 뚜껑을 제거하고 잔여물을 비워냅니다.



## 5/ 주의

어댑터는 장치 근처에 설치해야 하며 쉽게 접근할 수 있어야 합니다. 온도가 너무 높거나 너무 낮은 곳에서는 장치를 사용하지 마십시오. 또한 직사광선과 같은 강한 햇빛이나 너무 습한 환경에 장치를 노출시켜서는 안 됩니다. 이 제품과 액세서리에 적합한 온도는 0°C~ 40°C(32°F~104°F)입니다.

정상 범위의 실내 온도이고 통풍이 잘 되는 환경에 장치를 두고 사용하십시오.

온도 범위가 5°C~25°C(41°F~77°F)인 환경에서 장치를 사용하는 것이 좋습니다.

반드시 제조사에서 제공하는 어댑터만 사용하십시오. 승인되지 않은 어댑터를 사용하면 위험이 발생할 수 있으며 프로젝터의 승인 및 보증 조항을 위반할 수 있습니다.

이 충전기는 실내 전용 제품입니다. 어댑터의 정격 출력 전압/ 전류는 12VDC/2A입니다. 어댑터 플러그는 분리 장치로 간주됩니다.



귀하의 제품은 재활용 및 재사용이 가능한 고품질 재료와 부품을 사용하여 설계 및 제조되었습니다.



모델명 : T7200

인증번호 : R-C-AII-T7200

제품명 : 특정소출력 무선기기 (무선데이터통신시스템용 무선기기)

제조사 및 제조국가 : Anker Innovations Limited

제조일자 : 2021.08

해당 무선설비는 사용중 전파혼신의 가능성이 있음.

해당 무선설비는 전파혼신의 가능성이 있으므로 인명안전과 관련된 서비스는 할 수 없음.

## Customer Service | カスタマーサポート | 고객 서비스

---

Warranty | 保証 | 보증

12-month limited warranty | 通常保証 18 ヶ月 (延長あり) | 12 개월 보증 기간

Call Us | 電話でのお問い合わせ | 전화 문의

United States

+1 (800) 988 7973 Mon-Fri 6:15-17:00(PT), Sat-Sun 6:30-16:30(PT)

United Kingdom

+44 (0) 1604 936 200 Mon-Fri 6:00-17:00, Sat-Sun 6:00-14:00

Germany

+49 (0) 69 9579 7960 Mon-Fri 8:00-16:00

日本

03 4455 7823 月 - 金 9:00 - 17:00

Email Us | 電子メール | 이메일

Customer Support: support@eufylife.com

Anker Innovations Limited

Room 1318-19, Hollywood Plaza, 610 Nathan Road, Mongkok, Kowloon, Hong Kong



@EufyOfficial



@EufyOfficial



@EufyOfficial

